

Lightsource Test Report

Product Information

Product Category: 3W 3000K SLÝM PANEL ARMATÖR Product Number: IE NO0826913

Manufacturer: BORSAN

CIE Colorimetric Parameters

Chromaticity coordinates: $x=0.4439$ $y=0.3967$ $u(u')=0.2583$ $v=0.3463$ $v'=0.5195$ CCT: $T_c=2826K$ ($duv=-0.00379$)Color Ratio: $R=0.244$ $G=0.729$ $B=0.026$

Peak Wavelength: 611.0nm

Half Bandwidth: 110.3nm

Dominant Wavelength: 585.0nm

Color Purity: 0.523

Central Wave: 600.9nm

Gravity Wave: 604.3nm

CRI: $R_a=82.8$, $avgR(1\sim14)=78.6$, $avgR(1\sim15)=78.3$ TM30: $R_f=84$, $R_g=97$ GAI: $GAI_BB_8=105.2$, $GAI_BB_15=111.3$, $GAI_EES=55.1$

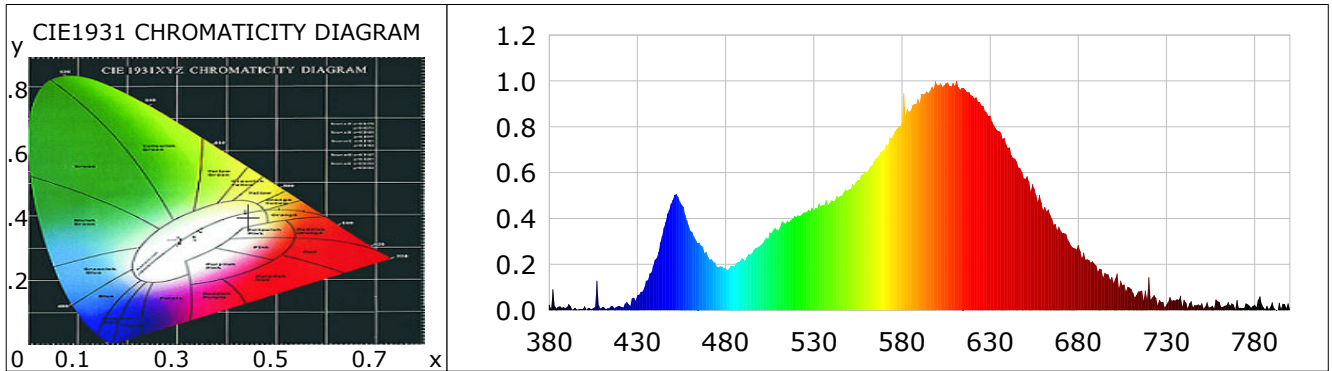
R1 =82 R2 =93 R3 =93 R4 =81 R5 =84 R6 =93 R7 =79 R8 =57

R9 =8 R10=86 R11=81 R12=80 R13=85 R14=97 R15=75 TLCI=65

Color Quality Scale: $Q_a=82.0$, $Q_f=83.0$, $Q_p=85.9$, $Q_g=93.4$

Q1 =77 Q2 =94 Q3 =84 Q4 =81 Q5 =84 Q6 =85 Q7 =83 Q8 =84

Q9 =94 Q10=90 Q11=85 Q12=81 Q13=81 Q14=72 Q15=74



Photometric Parameters

Luminous Flux: 168.70 lm

Efficiency: 55.54 lm/W

Radiant Power: 0.521 W

Total mains efficacy: 55.54 lm/W

Energy Efficiency Class: G (EU 2019/2015)

Pupil Flux: 208.54 Plm

Pupil Lumens Per Watt: 68.66 Plm/W

Pupil Factor (Kp): 1.236

Cirtopic Flux: 382.13 lm

Melanin Flux: 0.102 W M/R: 0.5039

MDER: 0.4585

Mesopic Flux (CIE R.): 186.12 lm ($L_p=0.100$ cd/m², $S/P=1.31$)Mesopic Flux (USP): 201.21 lm ($L_p=0.100$ cd/m², $S/P=1.31$)Mesopic Flux (MOVE): 189.13 lm ($L_p=0.100$ cd/m², $S/P=1.31$)

Electric Parameters

Voltage: 220.30V

Current: 0.0312A

Power: 3.04W

Power Factor: 0.4421

Frequency: 50.00Hz

DF: 0.9661

Test Information

Scan Range: 380~800:1nm

Stabilization Time: 0 Min ALC.: 1.0300

Max of Signal: 30629 (4195)

Photometric Method: sphere-spectroradiometer

Photometric Condition: Sphere diameter: 2.00m, 4PI

CCD Integration Time: 5153.52 ms

Condition: Tx:27.3°C, Ti:0.0°C, R.H.:60%

Test Lab:

Operator:

Test Device: CMS-2S (Plus)

Test Time: 2024-04-01 14:22:07

Inspector:

Lightsource Test Report

Product Information

Product Category: 3W 3000K SLÝM PANEL ARMATÖR Product Number: IE NO0826913

Manufacturer: BORSAN

WL(nm)	PL	PE(mW/nm)	WL(nm)	PL	PE(mW/nm)	WL(nm)	PL	PE(mW/nm)
380	0.0243	0.0898	535	0.4588	1.6939	690	0.1961	0.7240
385	0.0148	0.0545	540	0.4789	1.7682	695	0.1627	0.6009
390	0.0131	0.0484	545	0.4989	1.8419	700	0.1180	0.4356
395	0.0068	0.0252	550	0.5266	1.9444	705	0.1094	0.4040
400	0.0169	0.0623	555	0.5668	2.0928	710	0.0928	0.3428
405	0.0095	0.0350	560	0.6013	2.2200	715	0.0827	0.3054
410	0.0125	0.0463	565	0.6593	2.4341	720	0.1439	0.5312
415	0.0167	0.0616	570	0.6995	2.5829	725	0.0232	0.0857
420	0.0174	0.0642	575	0.7609	2.8096	730	0.0241	0.0892
425	0.0256	0.0945	580	0.8168	3.0158	735	0.0420	0.1550
430	0.0653	0.2411	585	0.8706	3.2144	740	0.0459	0.1694
435	0.1278	0.4719	590	0.9017	3.3294	745	0.0128	0.0471
440	0.2193	0.8095	595	0.9464	3.4944	750	0.0303	0.1120
445	0.3604	1.3308	600	0.9803	3.6196	755	0.0138	0.0510
450	0.4804	1.7738	605	0.9902	3.6561	760	0.0343	0.1267
455	0.4603	1.6995	610	0.9780	3.6108	765	0.0351	0.1296
460	0.3462	1.2782	615	0.9693	3.5788	770	0.0450	0.1661
465	0.2942	1.0861	620	0.9344	3.4499	775	0.0298	0.1102
470	0.2336	0.8626	625	0.8923	3.2947	780	0.0238	0.0879
475	0.1897	0.7006	630	0.8494	3.1363	785	0.0119	0.0440
480	0.1828	0.6748	635	0.7806	2.8823	790	0.0346	0.1279
485	0.1917	0.7077	640	0.7075	2.6124	795	0.0065	0.0240
490	0.2245	0.8288	645	0.6481	2.3930	800	0.0070	0.0257
495	0.2479	0.9154	650	0.5725	2.1138			
500	0.2843	1.0496	655	0.5306	1.9589			
505	0.3387	1.2505	660	0.4368	1.6126			
510	0.3480	1.2848	665	0.4006	1.4791			
515	0.3899	1.4397	670	0.3473	1.2823			
520	0.4063	1.5002	675	0.2950	1.0891			
525	0.4268	1.5759	680	0.2848	1.0516			
530	0.4350	1.6061	685	0.2227	0.8221			

Condition: Tx:27.3'C, Ti:0.0'C, R.H.:60%

Test Lab:

Operator:

Test Device: CMS-2S (Plus)

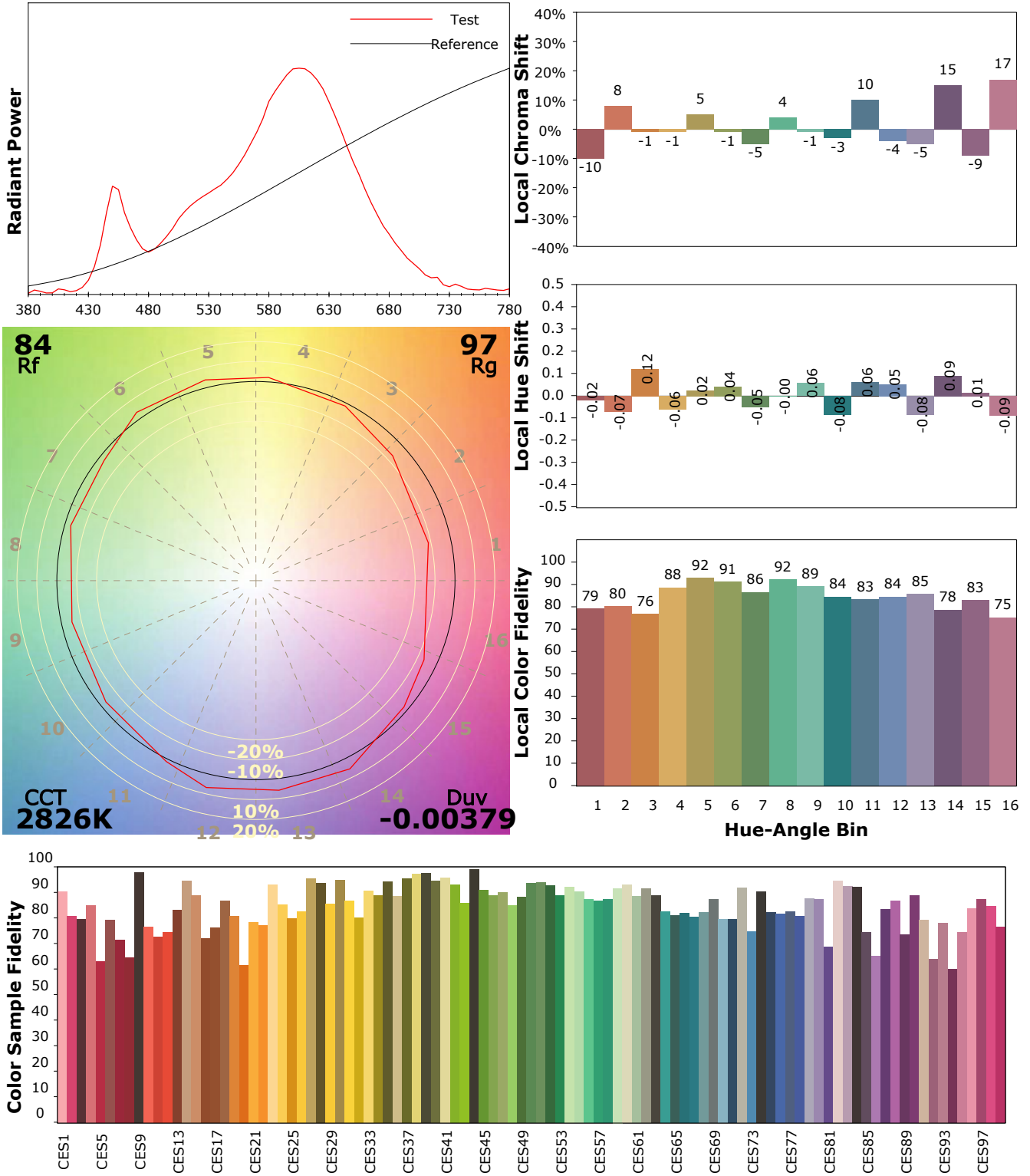
Test Time: 2024-04-01 14:22:07

Inspector:

Product Information IES TM-30-18 Color Rendition Report

Product Category: 3W 3000K SLÝM PANEL ARMATÖR Product Number: IE NO0826913

Manufacturer: BORSAN



Condition: Tx:27.3'C, Ti:0.0'C, R.H.:60%

Test Lab:

Operator:

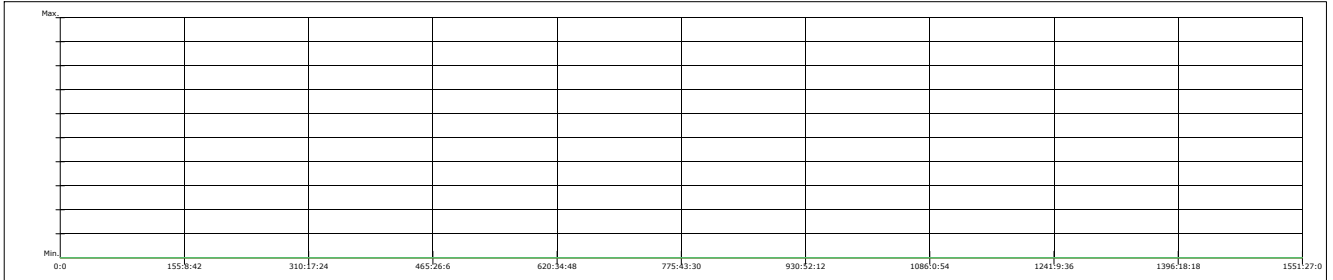
Test Device: CMS-2S (Plus)

Test Time: 2024-04-01 14:22:07

Inspector:

Preheating curve

Preheating curve



	Luminous Flux(lm)	Voltage(V)	Current(A)	Power(W)
Coor_max	0.00	0.00	0.00	0.00
Coor_min	0	0	0	0
max	0.00	0.00	0.00	0.00
min	0.00	0.00	-5.33894893551024400000000000000000.00	

Preheat time:

1700296 h

Sample interval:

5585204 s

Stable range:

4528130.60 %

Stable time:

1733:19:04

Condition: Tx:27.3'C, Ti:0.0'C, R.H.:60%

Test Lab:

Operator:

Test Device: CMS-2S (Plus)

Test Time: 2024-04-01 14:22:07

Inspector: